

A light gray, topographic-style map of Europe serves as the background for the slide.

# EGI

# The European Grid Initiative

Dr. Isabel Campos Plasencia  
EGI.eu Executive Board

# Overview

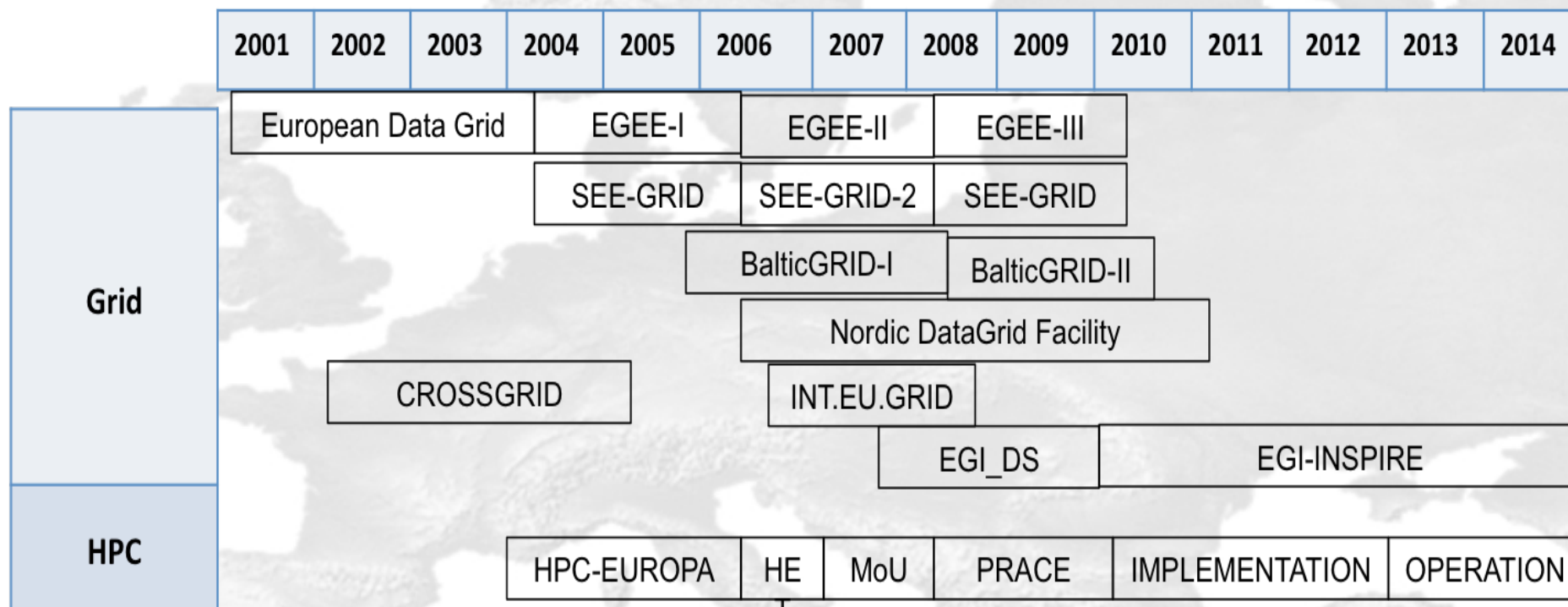
- **EGI Framework**
- **Setup of the foundation EGI.eu**
- **Technical bodies**
- **Operational bodies**
- **User Support & Services organization**
- **Perspectives**

# European Grid Infrastructure



- **A network of distributed clusters**
  - Using Geant as backbone
  - Over 40K CPUs and tenths of Petabytes of Storage
- **Providing support to hundreds of scientist** in very different areas
  - Physics, Life Sciences, Chemistry, Engineering,..
- Grid Computing is a **European landmark**
  - There is no such other facility in the world

# European Grid Infrastructure



Cyclic project funding through EU Framework needs to be consolidated



# The framework: European Grid Initiative: EGI

- **Goal**: Establishment of a sustainable e-Infrastructure at the level of
  - National infrastructures sustained by national funds:  
**National Grid Initiatives**
  - International research communities legally bind in **EIROs** (eg. CERN or EMBL) or **ESFRI** projects
- **Assumption**: each of these entities is able to support their own operations and their own users
- The **level of coordination** necessary to offer those resources to external collaborators will be provided by the **European Grid Initiative-EGI**

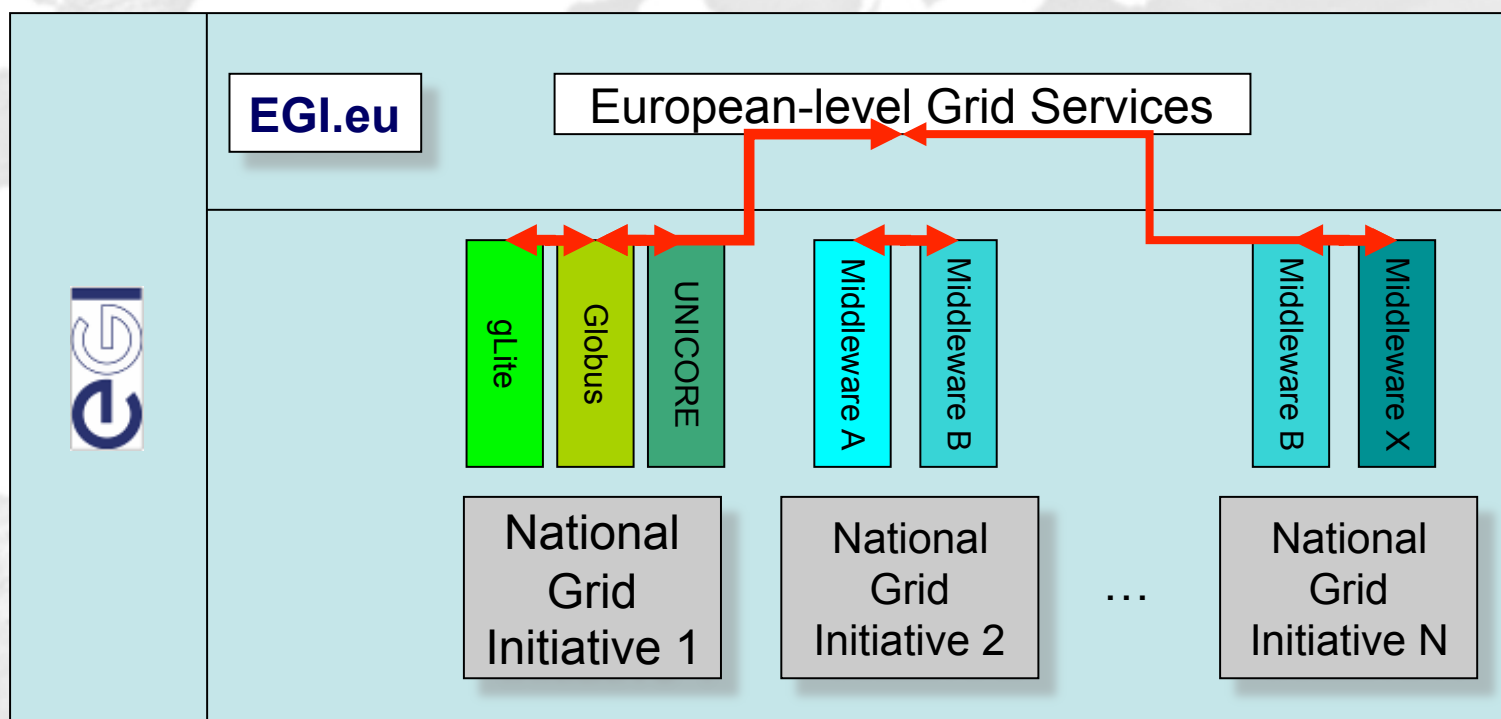
# What takes being a NGI

## Each NGI

- ... should be a recognized national body with a **single point-of-contact**
- ... should mobilize national funding and resources
- ... should ensure the operation of a national e-Infrastructure
- ... should support user communities (application independent, and open to new user communities and resource providers)
- ... should contribute and adhere to international standards and policies

# NGIs as Grid Stakeholders close to researchers

International Scientific and Research Collaboration



# The design study: EGI-DS

- The project **EGI Design Study** (Sept. 2007- Dec. 2009)
  - Dedicated to analyze and define the functions to be fulfilled by EGI
    - **User Community support**
    - **Operations and Security**
    - **Middleware development and support: UMD**
    - **Management**
- Concluded with the publication of the **EGI-DS Blueprint**
  - Guidelines, description of tasks needed to build the European Grid Infrastructure as a service for researchers

<http://web.eu-egi.eu/documents/other/egi-blueprint/>

# Some Definitions

- **EGI: European Grid Initiative**

- EGI is "the collaboration" defined by the EGI-DS Blueprint which is the collection of NGI's and EIROs
- EGI has a Council to take care of general policies and long term strategy

- **EGI.eu**

- EGI.eu is the operational entity to provide general services and coordination useful to all EGI stakeholders
- EGI.eu needs to have a legal entity to perform its duties: foundation
- EGI.eu has a small Executive Board to take care of the legal and management issues of the foundation and has the Council as supervisor

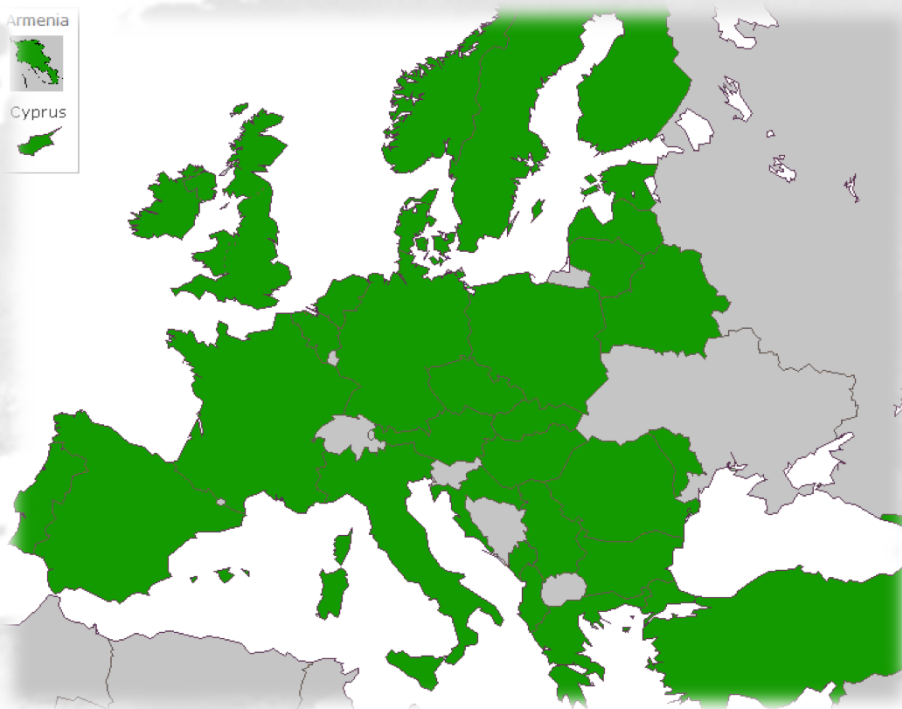
# The design study: EGI-DS

- The project **EGI Design Study** (FP7, Sept. 2007- Dec. 2009)
  - Organized the participation of the countries in EGI by assembling the EGI Council
  - Fostered the creation of National Grid Initiatives in the countries
    - Letters of Intent were requested to the Ministries
    - A Memorandum of Understanding was devised in order to move ahead before having formal Statutes
  - Organized the election of the physical location of EGI.eu
    - Amsterdam (Science Park)
  - Organized and follow-up on the developments of the first EGI Councils (July 2009 – December 2009)



# Development of EGI.eu

- **EGI Council first summit on 9<sup>th</sup> July 2009 in Amsterdam**
  - Participated by all the countries and EIROs that had signed the *Letter of Intent* and *Memorandum of Understanding*
    - **34 Countries + 2 EIROs**
  - Starting point for discussions about the statutes of **EGI.eu**



# EGI Statutes

**The Council has been defining the EGI statutes along 2009-2010**

- Define the financial and economic rules of the organization
  - **Membership fees, budget organization, etc...**
- Define the Role of the Council as governing body of the organization
  - **Each NGI and EIRO has a representative in the Council**
- Define the Role of the Executive Board
  - **Legal representation of EGI.eu (civil responsibility, liability, etc...)**
  - **Follow-up of the foundation**
- Define the Role of the Director
  - **Daily running of the foundation EGI.eu at the request of the Executive Board**

See the statutes in <http://www.egi.eu/about/governance/>

# Foundation of EGI.eu: 8<sup>th</sup> february 2010



Notary



Michal Turala  
(PL)

Neil Geddes  
(UK)



Isabel Campos  
(ES)



Arjen van Rijn  
(NL)



Sverker  
Holmgren  
(SE)



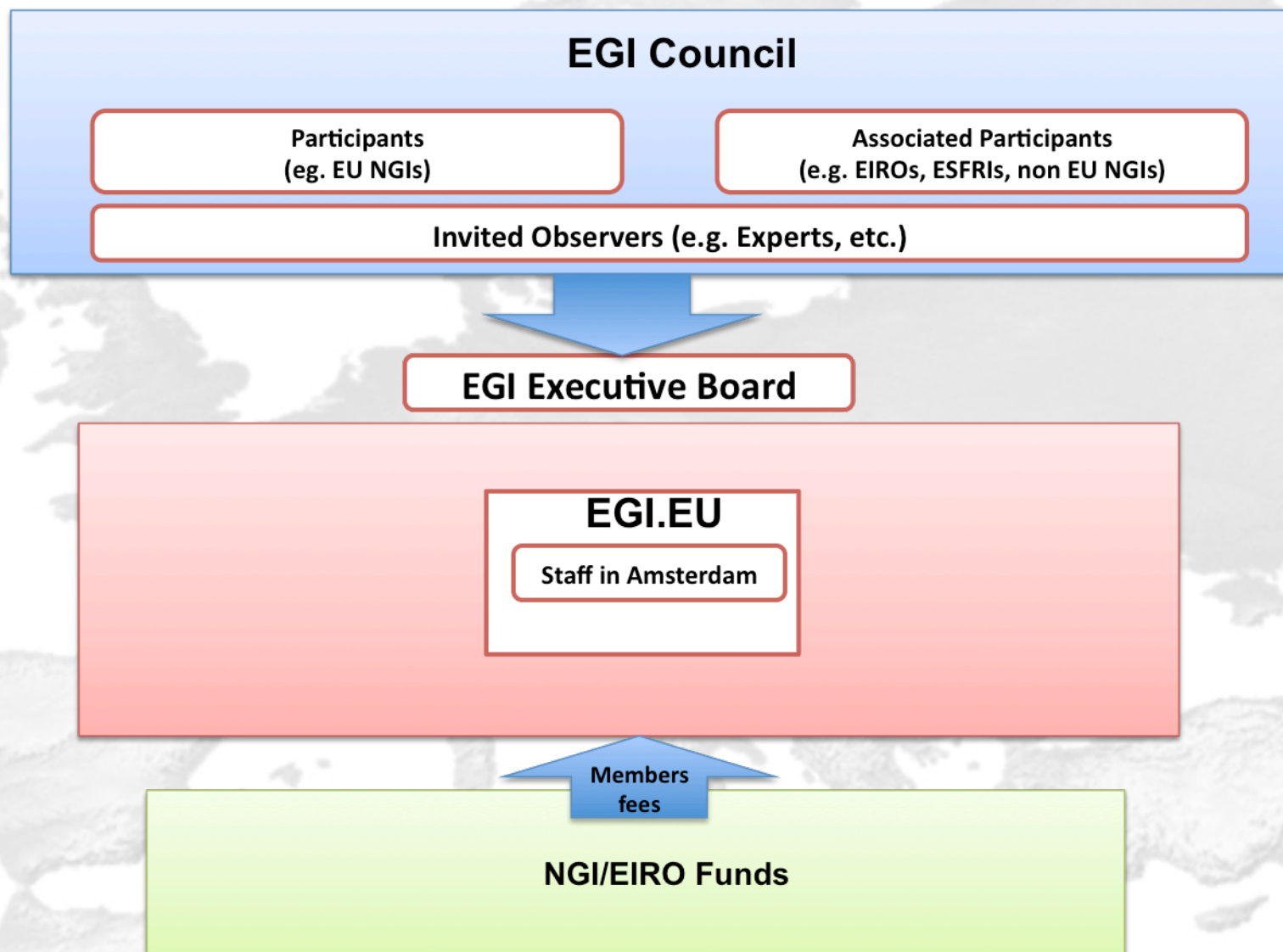
Dieter  
Kranzmueller  
(DE)



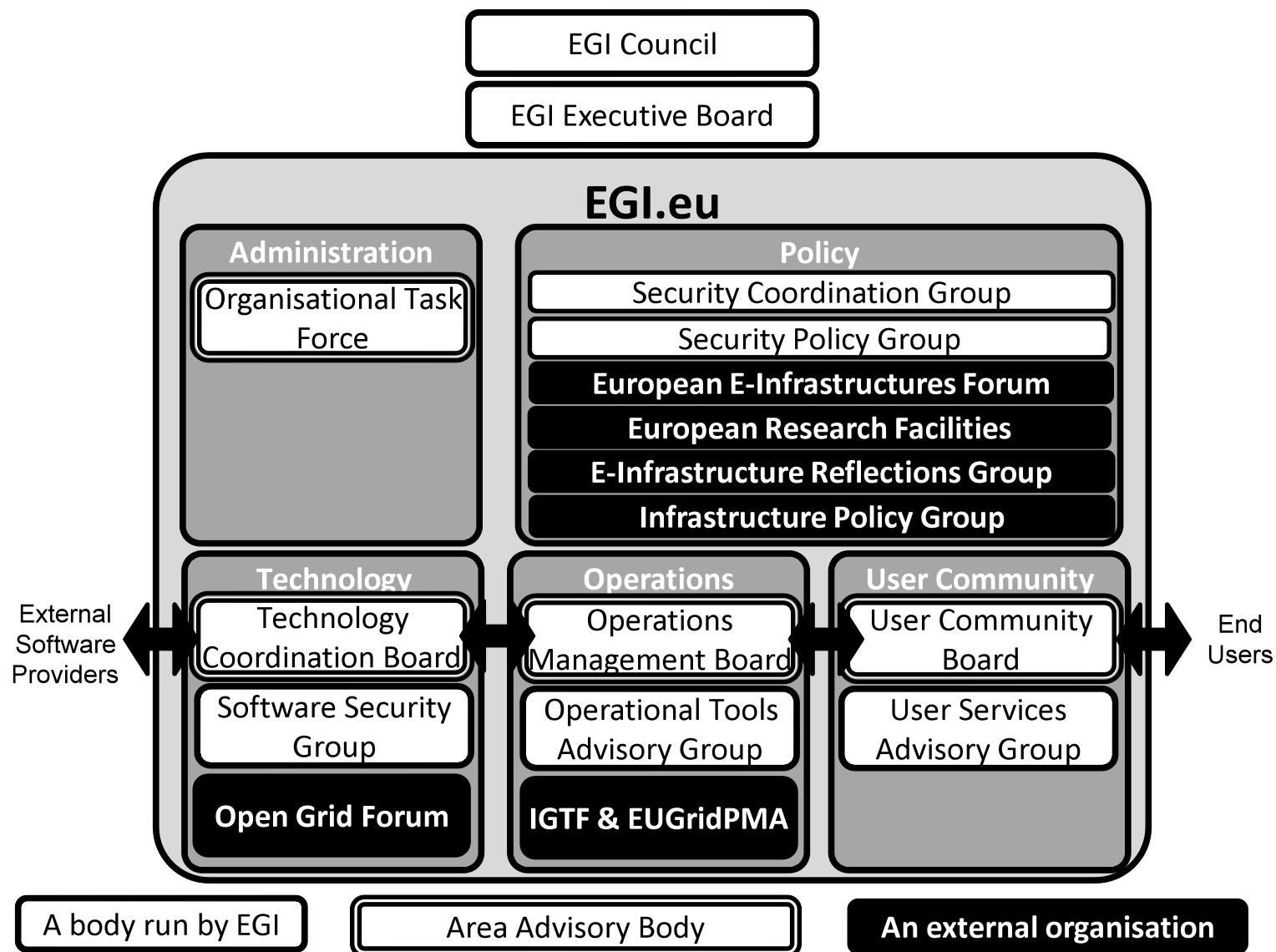
Per Oster  
(FI) as EGI Council Chair

- EGI.eu was founded Monday 8 February 2010 at the notary's office in Amsterdam.
- The EGI council “approved” the statutes for the new EGI.eu foundation
- The Council also elected its Executive Board of 7 members. Currently “patrons” of the EGI.eu foundation

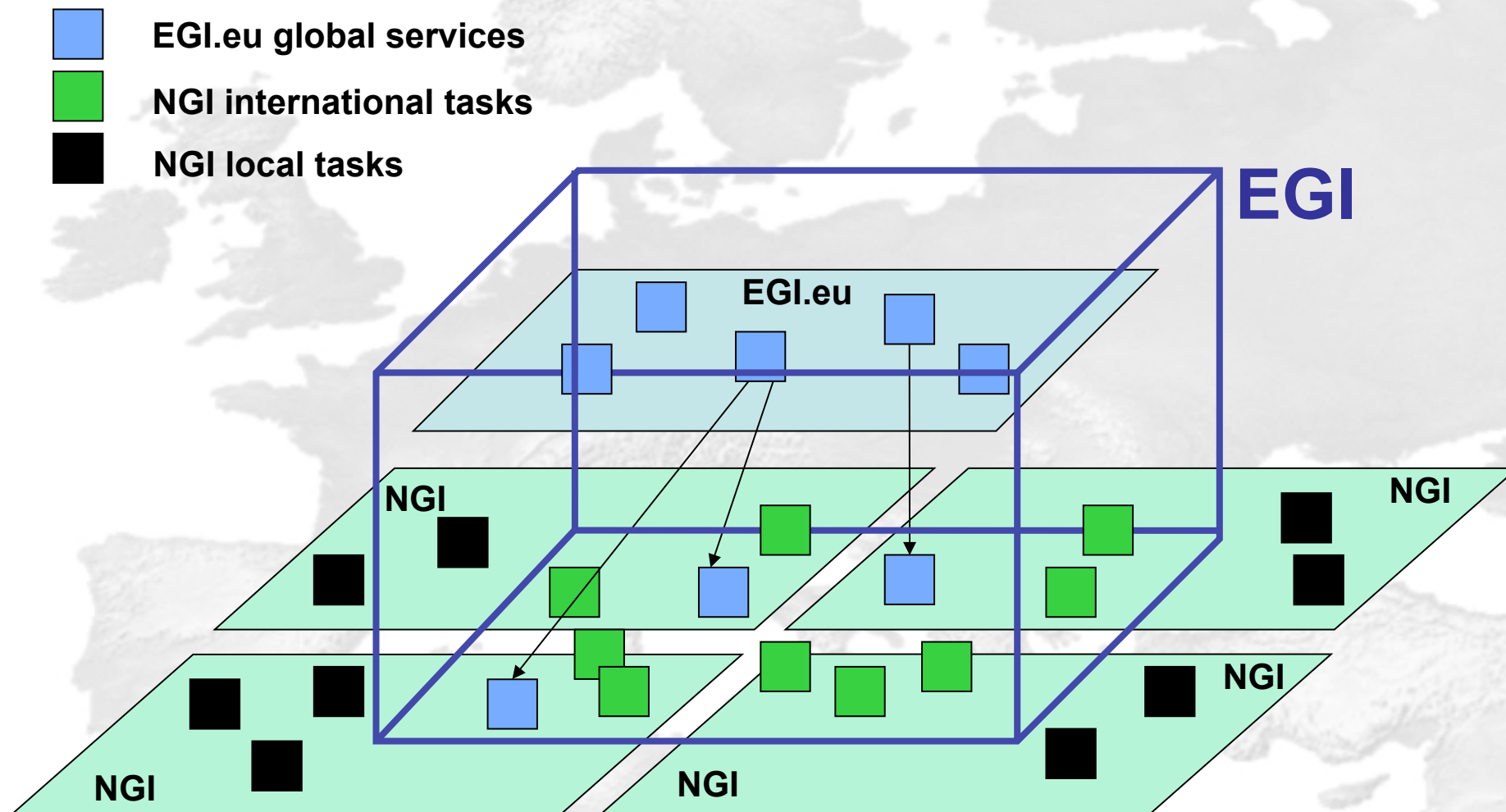
# EGI.eu Government



# Technical and operational bodies in EGI



# EGI levels of operation





# EGI Financial Model

- Long-term vision:
  - **Management**, funded through membership fees
  - **Operations**, funded through usage charges
  - **Innovations**, funded through co-funded grants (EC and others)
- Transition phase:
  - Strong support from EC required to establish EGI model and to keep it at the leading edge of technology
  - Usage fees will not be introduced
  - **EGI.eu Management**, funded through membership fees (1M€/year)
  - **Operations + Innovations**, funded through co-funded EC grant

A light gray, topographic-style map of Europe serves as the background for the slide. The map shows the continent's geographical features, including mountain ranges and coastlines, in a subtle, monochromatic tone.

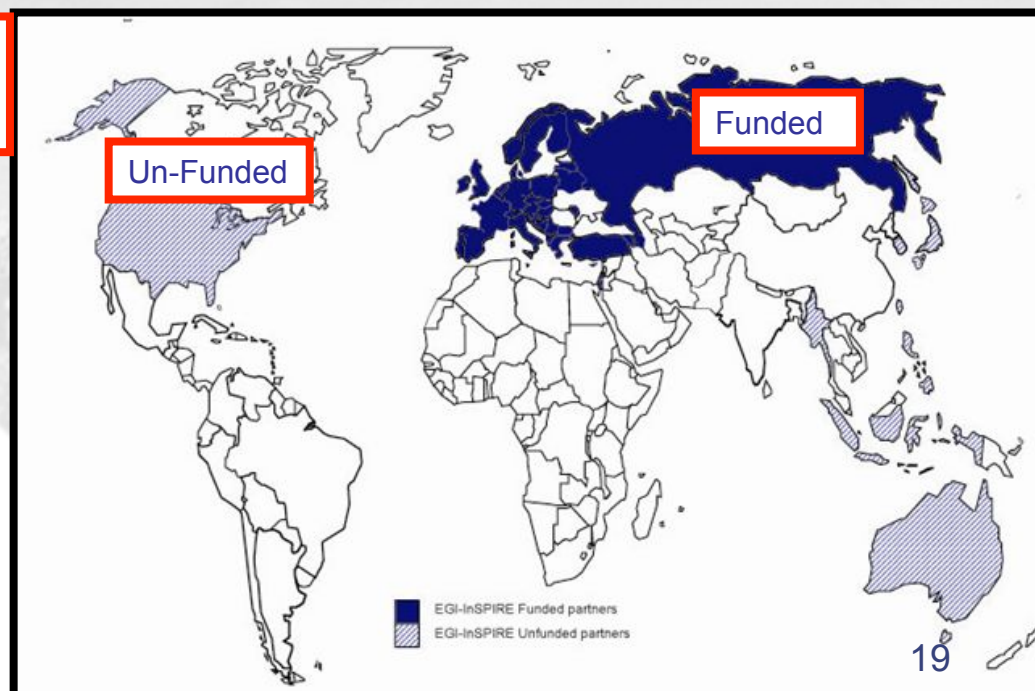
# THE PROJECT EGI-INSPIRE

**I**NTEGRATED **S**USTAINABLE **P**AN-EUROPEAN  
**I**NFRASTRUCTURE FOR **R**ESARCHERS IN **E**UROPE

# The EGI-InSPIRE Project

- It is a 4 year project with 25M€ EC contribution
  - Project Total cost 69M€
  - Staff ~ 170FTE

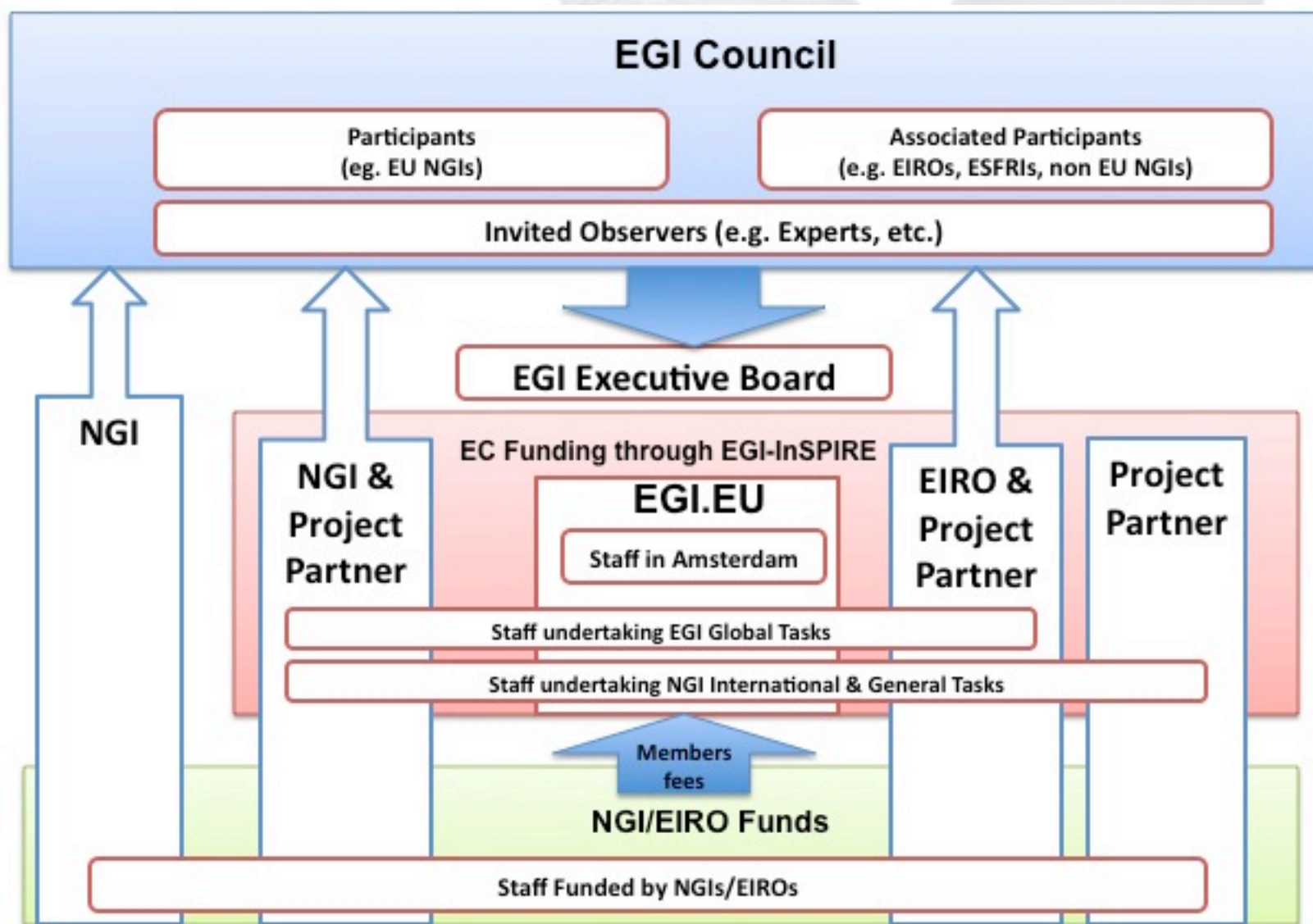
Project Partners (48)  
 EGI.eu, 37 NGIs, 2 EIROs, 8 AP



# EGI-InSPIRE Objectives

- EGI-InSPIRE is a 7<sup>th</sup> FP project
- Started 1<sup>st</sup> of May 2010 will go on 4 years
  - Transition to a sustainable federated European e-infrastructure built from national resources
  - Deliver production quality services to all its user communities and users
  - Provide a scalable user support model for international research communities within Europe and their worldwide collaborators
  - Interoperation and interoperability with other e-infrastructures

# Organization of EGI-InSPIRE





# Who does what in EGI-InSPIRE?

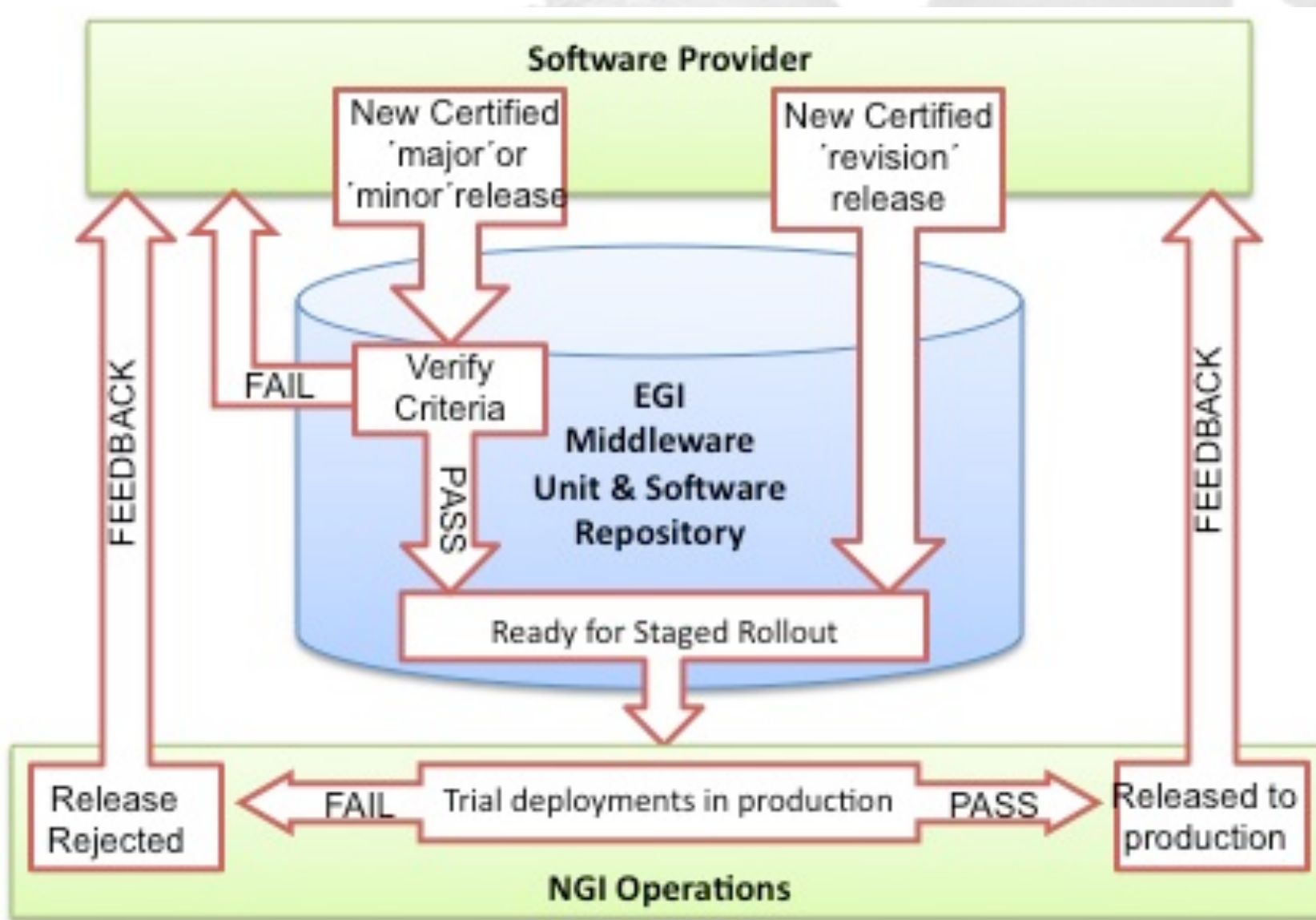
- **Internal National Infrastructure & Activities**
  - Infrastructure that is not visible internationally
  - Activities with no external dependency
- **NGI International Tasks**
  - The ‘service’ interface to your national grid
  - Community defined that EGI will enforce
- **EGI Global Tasks**
  - Provided by EGI.eu through community partners
  - Services needed for the whole EGI community



# EGI: Technical and Software design

- Recall some design facts:
  - EGI federation of national grid activities
  - EGI is not developing middleware
  - EGI does not control the resources its users use
- As a consequence:
  - EGI will need to integrate different middleware
  - EGI needs to identify interoperable solutions
- EGI must work with multiple software providers and deployments to achieve its goals

# EGI Software Infrastructure



# EGI Operations: Objectives

- **Continued operation and expansion** of today's production infrastructure
- “Set up an organisation that will enable the sustainable provision of grid services to the European scientific community”
  - **EGI global operations services**
  - **NGI/EIRO operations services**
- “The EGI should ensure a seamless and progressive transition in service provision from the current arrangements to a new scheme that is more sustainable organisationally and financially”
  - **Extension of accounting to support different business models**
- “The EGI should promote close collaboration and interoperability with similar infrastructures in other parts of the world.”
  - **Extension of operational procedures and policies**
  - **Enhancement of monitoring and accounting tools**

# EGI Operational groups and boards

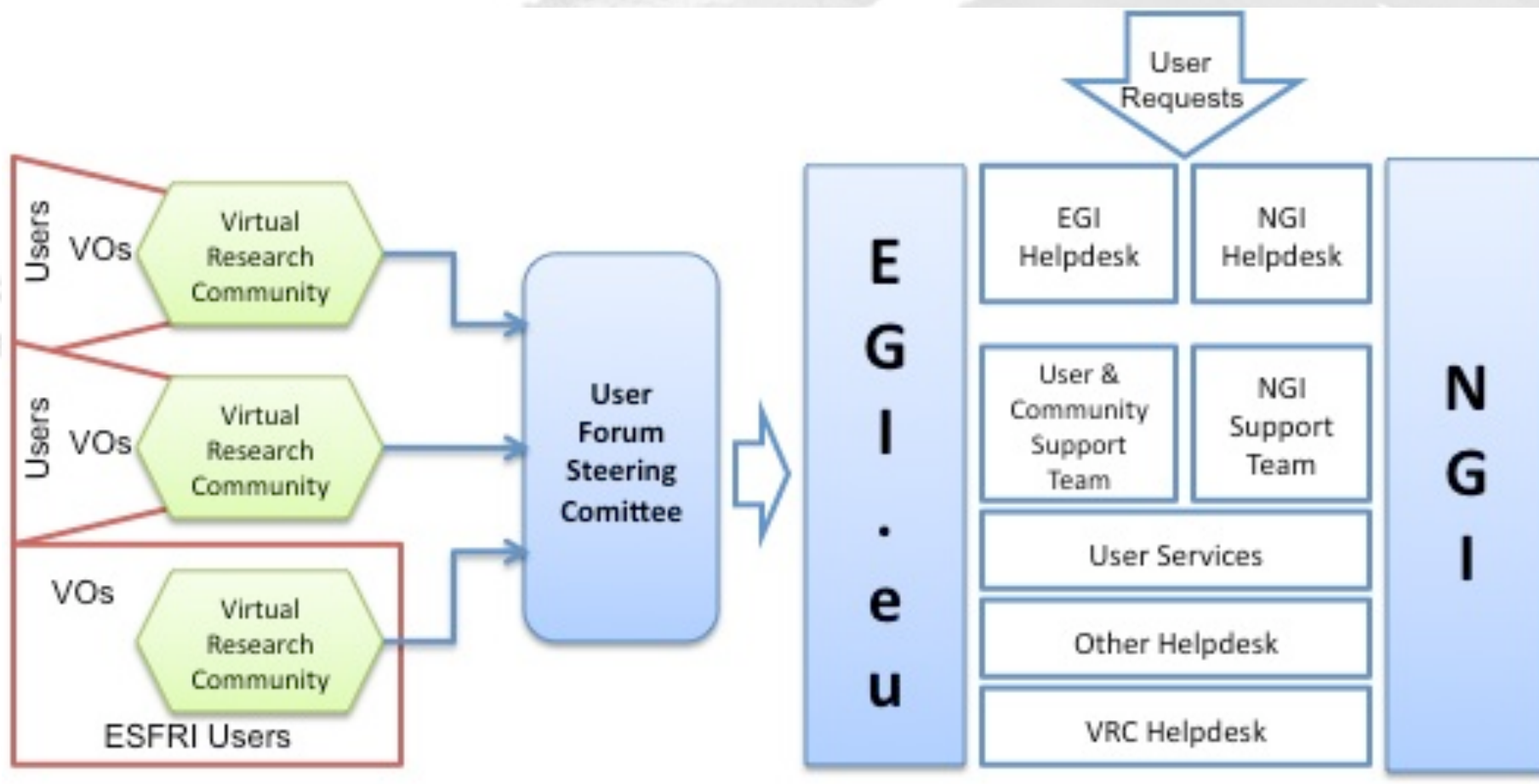
- **Security Policy Group (SPG)** development and maintenance of security policies that define the expected behaviour of sites and users to ensure a secure distributed computing infrastructure (NGIs, sites, application communities)
- **Software Security Group (SSG)** has representatives from the software providers contributing software to EGI in order to ensure a common coherent approach to the security frameworks.
- **Security Coordination Group (SCG)** coordination between the NGI operational security groups, the software security groups, the security policy activities both inside EGI and in other infrastructures and projects
- **User Services Advisory Group (USAG)** has representatives from the user communities to feedback to the EGI.eu on the user facing operations tools and support processes.
- **Operational Tools Advisory Group (OTAG)** has representatives from the NGI/EIRO Operations Centres and provides feedback on the operational tools and how they need to be adapted in response to EGI's requirements.

# User Support & Services in EGI

- Support User Communities
  - Researchers in International Collaborations
  - Scale up from the single VO to a community
- Provide a federated Helpdesk linking:
  - Discipline specific support (e.g. Bio Apps)
  - National infrastructure support (e.g. NGS)
  - Generic services (e.g. Training)
- Provide core services to support users
  - Manage VOs, Application DB, Training DB



# User Support & Services in EGI





# The role of Ibergrid in EGI

## **IBERGRID will operate inside EGI as a single entity**

- See upcoming presentation “Ibergrid transtion to EGI”

**The Spanish and Portuguese NGIs have joined forces to take an active role in the global tasks of EGI**

## **GLOBAL EGI TASKs UNDERTAKEN BY IBERGRID**

### **•EGI Operations**

- Middleware rollout will be coordinated from Ibergrid
  - **See Mario David presentation “Provisioning Grid Middleware for EGI”**
- Accounting portal and operational developments related to accounting
  - **See Javier López presentation “The Metrics Portal: a tool for EGI operations”**

### **•EGI Technology**

- Middleware certification and validation will be taken care by Ibergrid
  - **Definition of requirements for the UMD**
  - **Certification and validation process definition**

### **•EGI Support to User Technical Service**

- User Technical Services: tools available for user communities

# Perspectives

- **EGI has begun to work**
  - A legal entity, EGI.eu has been created to coordinate the European Grid
- **EGI-InSPIRE will undertake the migration** of the European Grid e-infrastructure and its services into a new sustainable governance model
  - The NGIs are already supporting over 90% of the total costs implied by EGI-InSPIRE.
- **EGI will evaluate multiple sources of funding** including new business models where services are to be offered for a fee or alternative direct contributions
- The union of **ES-NGI and INGRID in IBERGRID** has turned out to be a successful step towards a stronger implication of the Iberian peninsula in the development of EGI
  - **We are not a “marriage of convenience”, we are real collaborators !**



